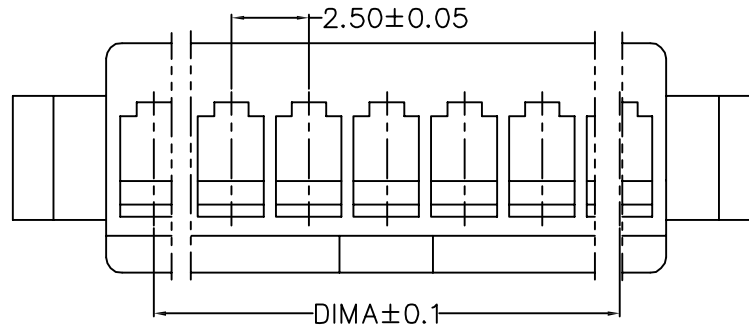


ROHS REACH

日期版次	日期	变更内容	核 准
REVISION	DATE	DESCRIPTION	APPROVALBY

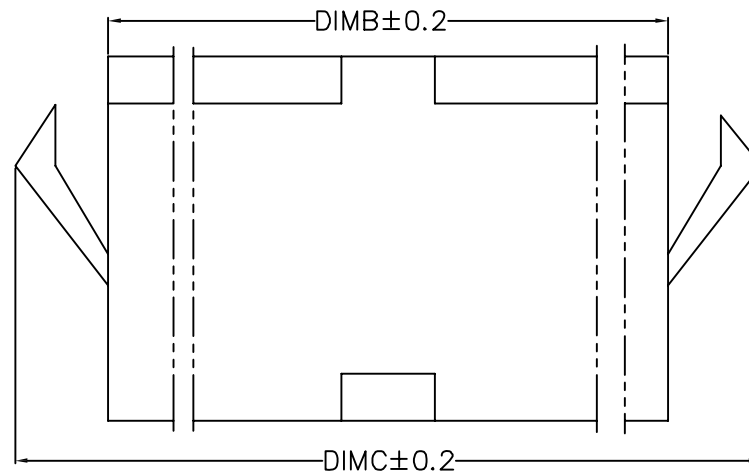
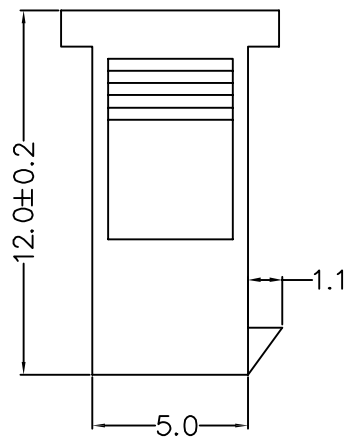


SPECIFICATIONS

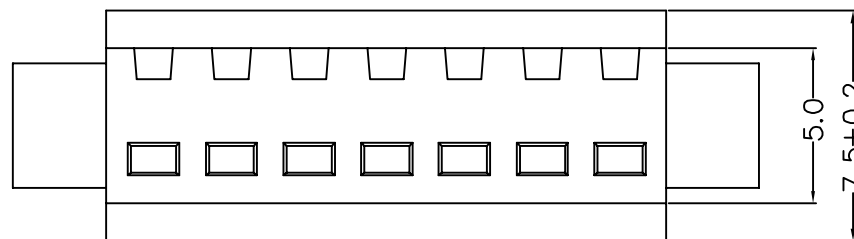
- Voltage rating: 250V DC/AC (rms)
- Current rating: 3.0A
- Withstand voltage: 1000V AC(rms)
- Working Temperature: -25°C +85°C
- Insulation resistance: ≥1000MΩ
- Contact resistance: ≤10MΩ

HOUSING

- PART NO: C2505HM
- MATERIAL: NYLON66 94V-0
- COLOR: BLACK
- USE WITH:
Terminal: C2505TF
- Q'TY: 1000PCS/BAG



poles	part no.	dimensions (mm)		
		A	B	C
2	C2505HF-2P	2.50	5.50	11.60
3	C2505HF-3P	5.00	8.00	14.10
4	C2505HF-4P	7.50	10.50	16.60
5	C2505HF-5P	10.00	13.00	19.10
6	C2505HF-6P	12.50	15.50	21.60
7	C2505HF-7P	15.00	18.00	24.10
8	C2505HF-8P	17.50	20.50	26.60
9	C2505HF-9P	20.00	23.00	29.10
10	C2505HF-10P	22.50	25.50	31.60
11	C2505HF-11P	25.00	28.00	34.10
12	C2505HF-12P	27.50	30.50	36.60



REV: A	APPROVE	CHECK	DRAWN	MATERIAL: PA66UL94-V0	GENERAL TOLERANCE	
SHEET: 1/1	FENG	ZENG	LIJIAN	UNIT: MM	X. ±0.30	X.* ±2°
				SCALE: 3:1	X.X ±0.25	X.X* ±1°
				SIZE: A4	X.XX ±0.15	⊥ ⊕

YSTZ 东莞市轩盟电子科技有限公司
DONGGUAN YSTZ ELECTRONIC TECHNOLOGY CO.,LTD

PART NO: C2505HM-NP-11E-06
TITLE: SM2.50mm Pitch Male Housing

ROHS REACH

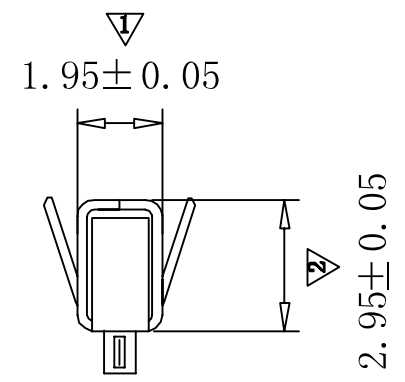
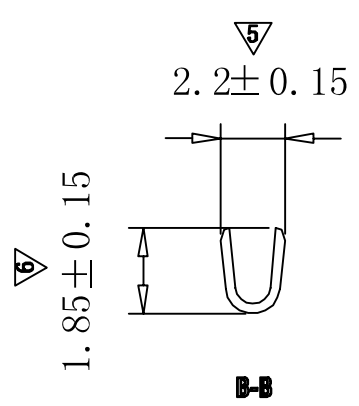
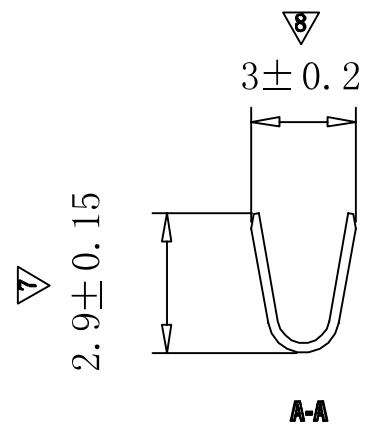
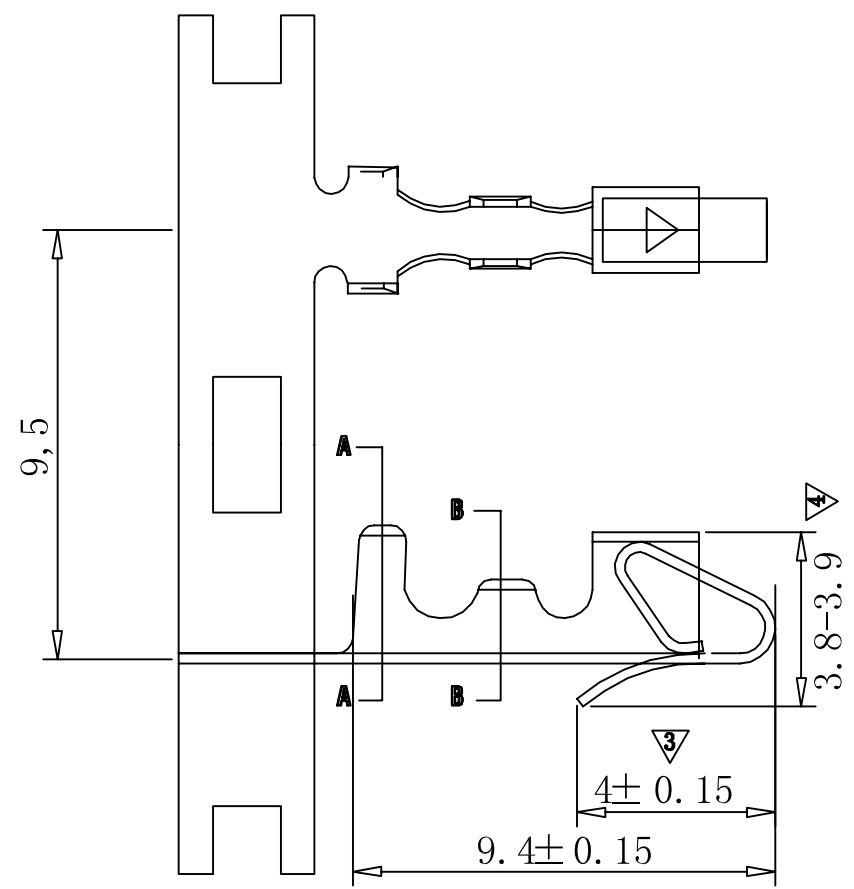
日期版次	日期	变更内容	核 准
REVISION	DATE	DESCRIPTION	APPROVALBY

SPECIFICATIONS

- Voltage rating: 250V DC/AC (rms)
- Current rating: 3.0A
- Withstand voltage: 1000V AC(rms)
- Working Temperature: -25°C +85°C
- Insulation resistance: ≥1000MΩ
- Contact resistance: ≤10mΩ

TERMINAL

- PART NO: C2505TF
- THICKNESS: 0.20MM
- MATERIAL: PHOSPHOR BRONZE
- FINISH: TIN-PLATED
- APPLICABLE WIRE: AWG#22-#28
- USE WITH: Housing: C2505HM
- Q'TY: 10000PCS/REEL



REV: A	APPROVE	CHECK	DRAWN
SHEET: 1/1	FENG	ZENG	LIJIAN

MATERIAL:	GENERAL TOLERANCE	
UNIT: MM	X. ±0.30	X.* ±2°
SCALE: 3:1	X.X ±0.25	X.X* ±1°
SIZE: A4	X.XX ±0.15	⊕ ⊖

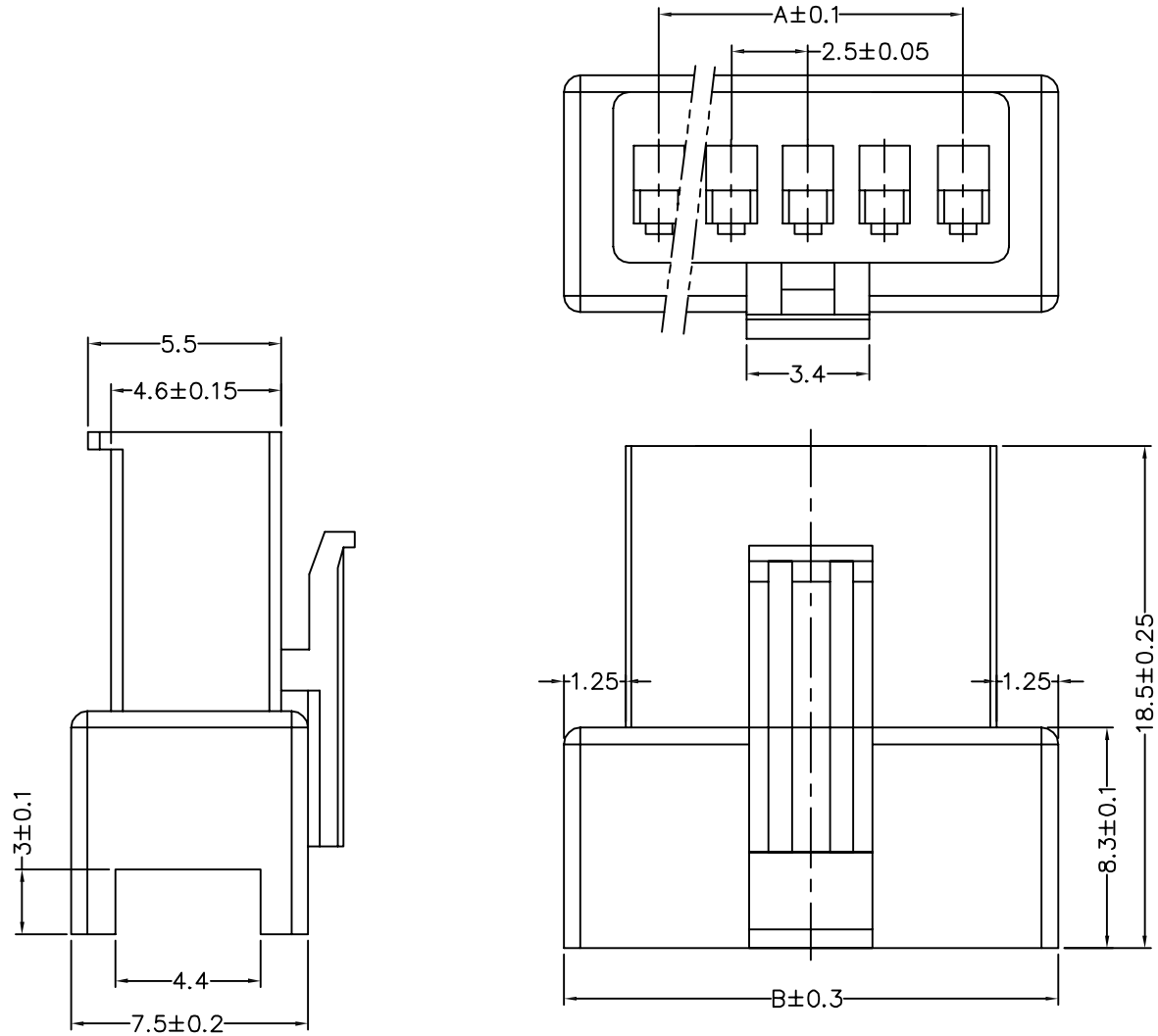
YSTZ 东莞市轩盟电子科技有限公司
DONGGUAN YSTZ ELECTRONIC TECHNOLOGY CO.,LTD

PART NO: C2505TF-PC-1E-06

TITLE: SM2.00mm Pitch Female Terminal

ROHS REACH

日期版次	日期	变更内容	核 准
REVISION	DATE	DESCRIPTION	APPROVALBY



SPECIFICATIONS

- Voltage rating: 250V DC/AC (rms)
- Current rating:3.0A
- Withstand voltage: 1000V AC(rms)
- Working Temperature:-25℃+85℃
- Insulation resistance:≥1000MΩ
- Contact resistance:≤10MΩ

HOUSING

- PART NO: C2505HF
- MATERIAL: NYLON66 94V-0
- COLOR: BLACK
- USE WITH:
Terminal:C2505TM
- Q'TY:1000PCS/BAG

poles	part no.	dimensions (mm)	
		A	B
2	C2505HF-2P	2.50	8.00
3	C2505HF-3P	5.00	10.50
4	C2505HF-4P	7.50	13.00
5	C2505HF-5P	10.00	15.50
6	C2505HF-6P	12.50	18.00
7	C2505HF-7P	15.00	20.50
8	C2505HF-8P	17.50	23.00
9	C2505HF-9P	20.00	25.50
10	C2505HF-10P	22.50	28.00
11	C2505HF-11P	25.00	30.50
12	C2505HF-12P	27.50	33.00

				MATERIAL:	GENERAL TOLERANCE		东莞市轩盟电子科技有限公司 DONGGUAN YSTZ ELECTRONIC TECHNOLOGY CO.,LTD
REV: A	APPROVE	CHECK	DRAWN	UNIT: MM	X. ±0.30	X.* ±2°	
SHEET:1/1	FENG	ZENG	LIJIAN	SCALE: 3:1	X.X ±0.25	X.X* ±1°	
				SIZE: A4	X.XX ±0.15		
				PART NO: C2505HF-NP-11E-06			TITLE : SM2.50mm Pitch Female Housing

ROHS REACH

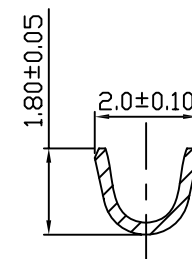
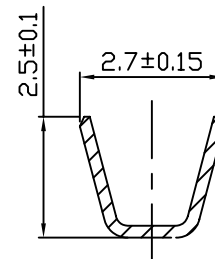
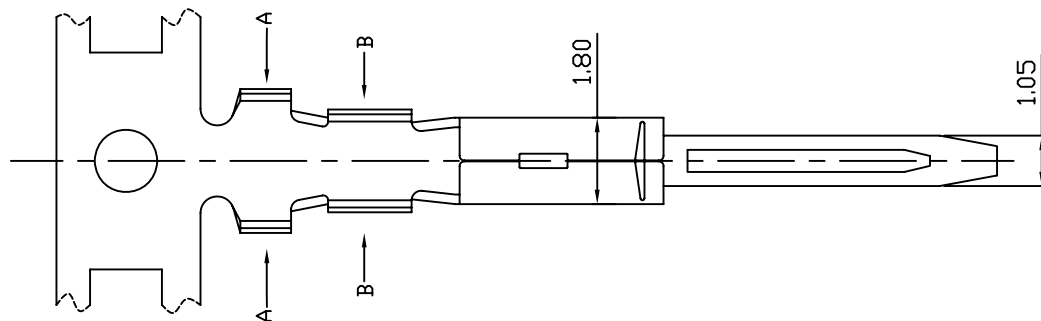
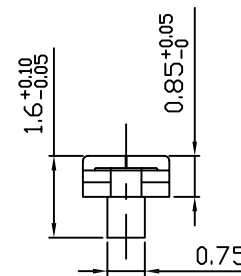
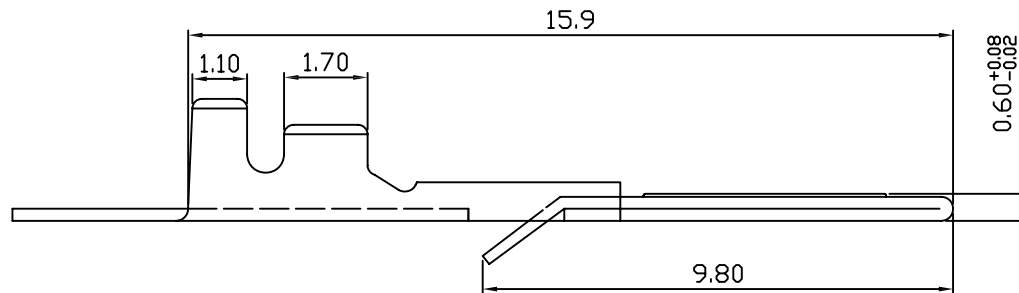
日期版次	日期	变更内容	核 准
REVISION	DATE	DESCRIPTION	APPROVALBY

SPECIFICATIONS

- Voltage rating: 250V DC/AC (rms)
- Current rating: 3.0A
- Withstand voltage: 1000V AC(rms)
- Working Temperature: -25°C +85°C
- Insulation resistance: ≥1000MΩ
- Contact resistance: ≤10mΩ

TERMINAL

- PART NO: C2505TM
- THICKNESS: 0.20MM
- MATERIAL: PHOSPHOR BRONZE
- FINISH: TIN--PLATED
- APPLICABLE WIRE: AWG#22-#28
- USE WITH: Housing: C2505HF
- Q'TY: 10000PCS/REEL



SECTION A-A

SECTION B-B

				MATERIAL:	GENERAL TOLERANCE		东莞市轩盟电子科技有限公司 DONGGUAN YSTZ ELECTRONIC TECHNOLOGY CO.,LTD PART NO: C2505TM-PC-1E-06 TITLE : SM2.00mm Pitch Male Terminal
REV: A	APPROVE	CHECK	DRAWN	UNIT: MM	X. ±0.30	X.* ±2*	
SHEET: 1/1	FENG	ZENG	LIJIAN	SCALE: 3:1	X.X ±0.25	X.X* ±1*	
				SIZE: A4	X.XX ±0.15		