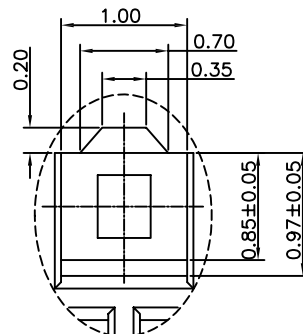
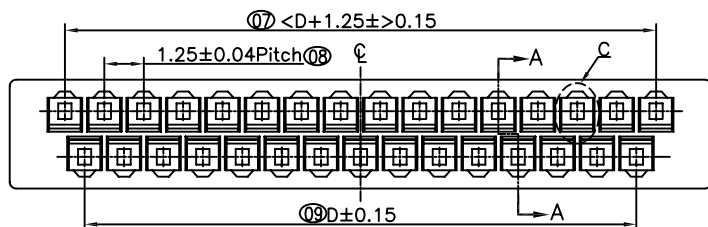
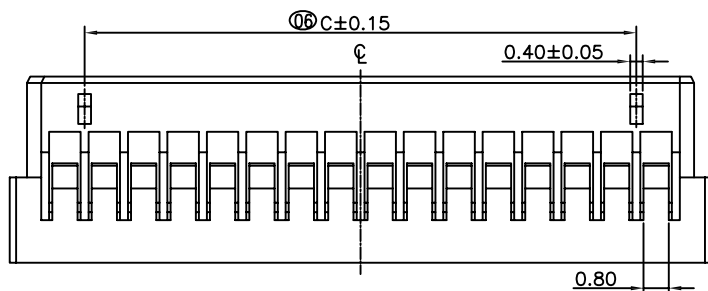
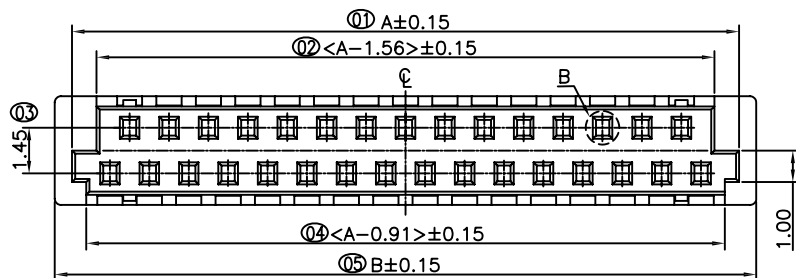
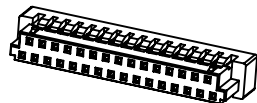
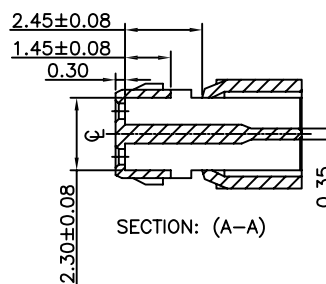
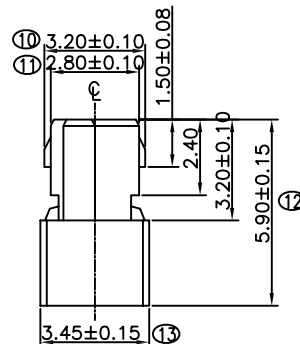


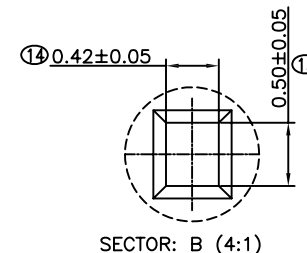
ROHS REACH



SECTOR: C (4:1)



SECTION: (A-A)



SECTOR: B (4:1)

SPECIFICATIONS

- Voltage rating: 200V DC/AC (rms)
- Current rating: 1.0A
- Withstand voltage: 500V AC(rms)
- Working Temperature: -25°C+85°C
- Insulation resistance: ≥100MΩ
- Contact resistance: ≤20MΩ

HOUSING

- PART NO: A1256H
- MATERIAL: PA66+15%GF 94V-0
- COLOR: BLACK
- USE WITH:  
Terminal: A125T  
Wafer: A1256R A1256V
- Q'TY: 1000PCS/BAG

poles	part no.	dimensions (mm)			
		A	B	C	D
21	A1256H-21P	14.91	16.00	11.25	11.25
31	A1256H-31P	21.16	22.25	17.50	17.50
41	A1256H-41P	27.41	28.50	23.75	23.75
51	A1256H-51P	33.66	34.75	30.00	30.00

MATERIAL:  
PA66UL94-V0

GENERAL TOLERANCE

UNIT: MM

X. ±0.30 X.\* ±2°

SCALE: 3:1

X.X ±0.25 X.X\* ±1°

SIZE: A4

X.XX ±0.15

**YSTZ** 东莞市轩盟电子科技有限公司  
DONGGUAN YSTZ ELECTRONIC TECHNOLOGY CO.,LTD

PART NO: A1256H-NP-11E-01

TITLE: FIS1.25MM PITCH Dual Row HOUSING

REV: A	APPROVE	CHECK	DRAWN
SHEET:1/1	FENG	ZENG	LIJIAN